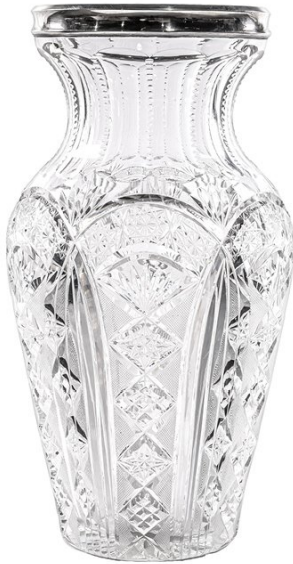




cabinet of curiosity



Large Cut Glass Vase with Silver Mount on the Rim

Wolfers Freres

AED 5000

QTY: 1



Delivery:

1 to 5 days within the UAE,
depending on the size of the object
and the location to be delivered to.

International Delivery:

please read all details on our
website

ABOUT

Large cut glass vase of tapering baluster form with silver mounted rim. The body is deeply cut with panels of hobstar, diamond, fan, and cross-hatched ornament, combined with vertical fluting around the neck and base. The silver mount is marked "A835" alongside a maker's mark, reading "W" under the emblem. Preserved in very good antique condition, with minor scratch marks to the base and no visible chips or cracks.

Wolfers Freres was one of Belgium's leading luxury houses, active in Brussels from the 19th century onward and renowned for silver, crystal, jewelry, and decorative arts. Founded by Louis Francois Guillaume Wolfers (1820-1892), the firm achieved international recognition under the direction of his sons Philippe, Max, and Robert Wolfers.

Philippe Wolfers (1858-1929), trained at the Royal Academy of Fine Arts in Brussels, became one of the major figures of Belgian Art Nouveau. Under his artistic direction, Wolfers Freres produced highly refined silverware and decorative objects distinguished by flowing natural forms, botanical ornament, and exceptional craftsmanship. The firm later expanded into Art Deco production and remained official suppliers to the Belgian Royal Court.

ITEM DETAILS

Reference: #GCV278

CREATOR

Wolfers Freres

PERIOD / DATE

Late 19th - Early 20th Century

PLACE OF ORIGIN

Belgium

DIMENSIONS

H 41 cm x Dia 22 cm

MATERIALS & TECHNIQUES

Cut Glass - A835 Silver

CONDITION

Very Good