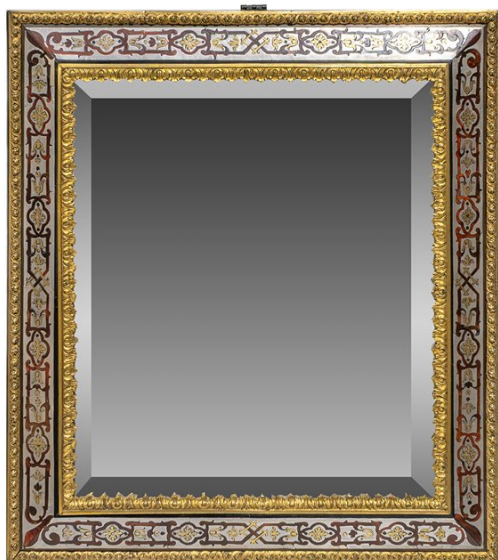




cabinet of curiosity



Gilt Bronze and Pewter Boulle Marquetry Dressing Table Mirror

AED 17000

QTY: 1



Delivery:

1 to 5 days within the UAE,
depending on the size of the object
and the location to be delivered to.

International Delivery:

please read all details on our
website



Available For Home Viewings:

Schedule a viewing to see this piece
in your home

ABOUT

Small Belle Epoque bevelled dressing table mirror in the Louis XIV style. The gilt bronze frame inlaid with red tortoiseshell boulle-work over a pewter ground, completed with gilt bronze acanthus rims. Backed in oak with an adjustable support.

ITEM DETAILS

Reference: #F052

CREATOR

Unknown

PERIOD / DATE

c. 1900

PLACE OF ORIGIN

France

DIMENSIONS

H 44 cm x W 39 cm x D 1.5 cm

MATERIALS & TECHNIQUES

Gilt Bronze - Pewter - Tortoiseshell

Boulle-Work - Oak - Bevelled Glass

CONDITION

Excellent